

EWR2 Project Newsletter Summer 2023

 EWR Alliance





Table of Contents

Welcome	4
Project Progress Update	5
Progress Update - Railway Systems	7
Environment & Ecology update	8
Winslow & Bletchley High Level Station	9
Alliance continues rail safety campaign	10
Progress with utilities	12
Structures Progress	13
Road Closures & Traffic Management	16
Public Rights of Way	19
Stakeholder engagement	20
Leaving a lasting social legacy	22
Fantastic fourth gold RoSPA award for the Alliance	24
Land reinstatement and compound demobilisation update	25
Rail Minister visits Winslow Station	26



Welcome

Welcome to the Summer 2023 issue of the EWR2 Project Newsletter.

As you will read in this latest issue, we continue to make good progress with the construction of the new railway between Bicester and Bletchley. I am pleased to report that the new track installation has now been substantially completed in the sections from Bicester in Oxfordshire to Charndon Lodge in Buckinghamshire and from Bletchley in Milton Keynes to the west of Queen Catherine Road in Steeple Claydon.

Read the interactive, electronic version of this newsletter by scanning the QR Code:



Across the project, we have also successfully installed 12 new footbridges over the railway, with the last one completed at Bletchley High Level Station in May. We are also working hard to reopen all the public rights of way (PRoWs) that cross the project footprint by the end of this year, we would like to extend our thanks for your patience and understanding during this period.

We continue with our demobilisation and reinstatement works, returning the construction compounds and worksites to their original condition and handing land back to landowners. You can read more about this process in the newsletter.

The Alliance is also working closely with the local authorities to complete the highway works associated with the project. This includes removing temporary construction accesses and road reinstatement works, and building new access points to the railway. Importantly, this also includes repairing damage related to the HGV movements required for the project. Work has already been completed at Queen Catherine Road (Steeple Claydon), Station Road (Mursley) and Verney Road (west of Winslow) and will be continuing through to early 2024. Unfortunately, these works require road closures to complete, and we would like to apologise for the inconvenience this causes to road users.

EWRA remains very appreciative of the continued support and interest in the project and we would again like to apologise for the disruption caused by our works.

Finally, as you will read on page 22, I am delighted to report that we delivered over £600,000 of social value activities in financial year 2022/23 as part of our ongoing commitment to leave a lasting social legacy through the delivery of the project. We are also inviting members of the community to come and visit one of our ecological compensation sites later this summer. For more information on this please see page 8.

Kind regards,

Mark Cuzner

Alliance Director



New Track Construction (NTC) train

Project Progress Update

Works to construct the new railway between Bicester and Bletchley are now 80% complete.

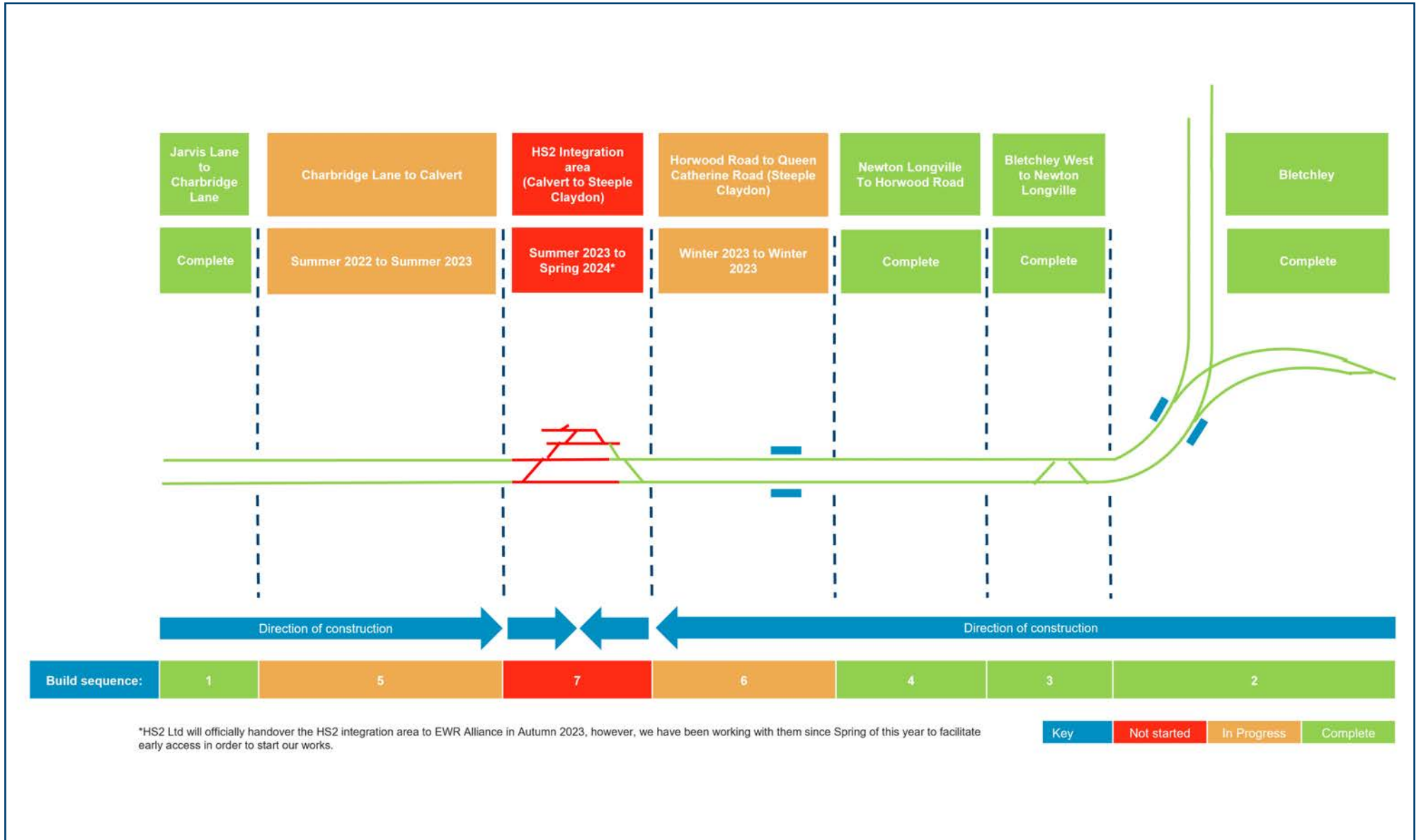
Originally closed to passenger trains in the late 1960s, the resurrected route – East West Rail Phase 2 (also known as Connection Stage One CS1 in the wider East West Rail programme) - incorporates 66km of new track (twin track), with a line speed of 100mph. The scheme also includes provision of a passing loop at Claydon for freight trains and a connection to HS2 Limited's infrastructure maintenance depot (IMD).

Supported by a Transport and Works Act Order (TWAO), main construction works began in 2020, driven by an intensive programme of earthworks and civils (including bridge installations/refurbishments and highways modifications), supported by comprehensive environmental mitigation. This in turn paved the way for track installation, starting in late 2021 with the upgrade and utilisation of the existing railheads at Bicester and Bletchley. This enabled East West Rail Alliance, responsible for the construction of EWR2, to bring in materials by rail, thus significantly reducing the project's impact on the local road network – an approach the Alliance also replicated at Bicester. The remainder

of the track construction work will continue to be supported by train deliveries from both Bletchley and Bicester, and, where possible, these are operated during normal working hours. Due to the constraints of the entire UK railway network and due to incidents like industrial action, it is sometimes necessary for this to happen outside of normal hours. The project continues to deploy our dust mitigation measures including the recent enhancement of additional dousing using our innovative gantry positioned near Winslow.

Another key enabler has been the New Track Construction Train (NTC), which uses proven technology to lay track much faster, with less plant and personnel required when compared to more conventional construction methods. Capable of installing over 1km of track in a single shift, the NTC is charged with delivering 95% of the overall track construction programme.

View our latest track construction map for information on our sequence of works.



Progress Update - Railway Systems

Following the track construction the railway signalling, power and communications (SP&C) team is responsible for the installation of the requisite equipment required to enable the signaller to control the safe movement of trains, through the operation of the signalling system and associated infrastructure.

Explained Mark James, EWRA's Head of Track/SP&C: "Put simply, SP&C is all of the various power and control systems required to enable the safe operation of trains, with its principal role to make sure that they all work together in an integrated way."

On East West Rail Phase 2, key SP&C deliverables to date include:

- Distribution Network Operator (DNO) cabinets - 10 of 10 installed. These supply power from the National Grid via the DNO to trackside signalling, principal supply points, location cabinets, telecoms relocatable equipment buildings and Global System for Mobile Communications – Railway (GSMR) telecoms masts etc
- Principal Supply Points/Auxiliary Supply Points - 2 of 3 installed, converting the mainstream power supply for use by the railway
- Relocatable Equipment Buildings – 3 of 7 installed, housing the radio, fibre communications and control system equipment
- Maintenance team cabin
- Lineside cabling – 58km out of 94km installed
- Location cabinets (signalling and telecoms) – 41 out of 95 installed (photo below)
- Lightweight signals – 20 of 61 installed (photo below)
- Axle counters – 50 out of 208 installed

Our system maximises the use of fibre optic cables and minimises traditional copper materials, reducing use of precious metallic resources and also the risk of theft and vandalism.

On completion of SP&C systems installation, the project will then enter the testing and commissioning phase, before handing over the finished railway to Network Rail and the East West Railway Company (for the Department for Transport), with rail services scheduled to run over the new route from 2025.

Watch this space for further updates on project progress...



SPC cabinet equipment (left) and SPC line side signal (right).

Environment & Ecology update

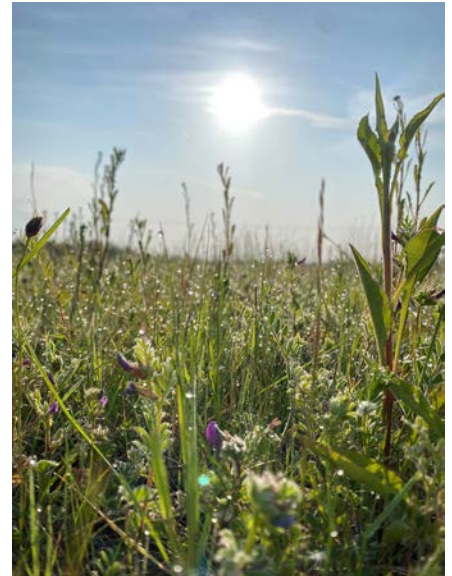
Take part in our environment competition and register to visit one of our ecological compensation sites!

The Ecological Compensation Sites (ECS) created by the Alliance are strategically located in areas close to the line of route.

A total of 20 sites have been established to provide large areas of land for the environment to flourish with newly built:

- Holts for otters
- Setts for badgers
- Ponds for frogs, newts and insects
- Embankments for lizards and snakes
- And even a house for bats!

The EWR Alliance is running a competition over the summer holidays to see what children (ages 5-7 and 8-13) would put in their ecological compensation site for their favourite animal. It could be a drawing, painting, model, collage or something creative.



Wildflowers at an ECS site

Lucky winners will receive a fun science kit. To take part in the competition, a picture submission needs to be emailed to publicinformation@ewralliance.co.uk by Friday 29 September. Please include the child's name and age with the submission. The winners will be sent the prizes and their winning submissions shared in our next newsletter.

In addition to our competition, we are inviting members of the community to visit one of our ECS sites in person. A member of our ecology team will provide a tour of the site to see examples of created and establishing habitats and to answer questions you might have about the sites and species within them. If we're lucky we may get to see some of the interesting species which have colonised the sites.

The Alliance will be hosting escorted visits over two dates this summer:

- Saturday 19 August, 9:30am-12pm – near B3 Compound in Winslow
- Saturday 19 August, 1pm-3:30pm – near B3 Compound in Winslow
- Saturday 2 September, 9:30am-12pm – near A1 Compound in Bicester
- Saturday 2 September, 1pm-3:30pm – near A1 Compound in Bicester

There are 20 spaces available for each session, sturdy footwear is required and light refreshments will be provided. This visit is open to those aged 12 and over and all children attending must be accompanied by an adult.

Please note that the places will be allocated on a first come first served basis and pets are not permitted.

To register your spot to attend, please scan the QR Code on the right and complete the form.



Winslow & Bletchley High Level Station

East West Rail's new stations at Winslow and Bletchley High Level Station (BHLS) continue apace, with both now equipped with new footbridges.

In addition to a new footbridge connecting the new platforms on Bletchley Flyover to the existing Bletchley train station, further works have included general cladding and glazing, walls and ceilings and cable route containment. Remaining are the internal fit-out including equipment, flooring, electrical systems (lighting, cabling and fire alarms), furnishing and finishing (painting etc), lift installation, customer information systems (CIS) and testing and commissioning.

At Winslow, footbridge installation has been completed and there is ongoing works for the cladding, drainage, forecourt installation including foundations and road construction, plus paving, fencing and internal walls. Remaining works include the internal fit-out, equipment, flooring, electrical systems (including lighting, cabling and fire alarms), furnishing and finishing (painting etc), lift installation, CIS and testing and commissioning.

Both stations are scheduled for completion of testing and commissioning in 2024.



Aerial image of Winslow Station taken June 2023



Aerial image of Bletchley High Level Station taken in June 2023

Alliance continues rail safety campaign

East West Rail Alliance is working with local schools and the wider community to help promote rail safety as the opening of the new East West Rail route (Bicester – Bletchley) draws closer.

Although passenger services aren't due to start running until 2025, track construction works mean that this route is now classed as 'live,' with engineering trains regularly in operation. As such, the line is governed by the same strict rules and regulations as the rest of the UK rail network, designed to keep everyone safe and making it out of bounds to the general public.

In support of these changes, new permanent fencing with associated signage and security has been installed alongside the railway boundary, restricting access to trespassers and highlighting the dangers of doing so.

As owner and operator of the national rail infrastructure, Network Rail is responsible for keeping passengers and those who live or work near the railway safe and, supported by its industry partners, actively campaigns to raise awareness of how to stay safe on the railway. This includes national publicity campaigns, highlighting the dangers and risks in a rail environment which can lead to fatal consequences.

In direct support of this and to help reinforce the rail safety message, particularly in and around those areas served by the railway, the EWR Alliance and the East West Railway Company has launched a dedicated rail safety programme aimed at local schools and community groups.

Explained the Alliance's Community Liaison Officer Buthaina Sa'id: "We have already visited a number of schools, where we carry out activities and discussions focusing on how to behave at a station and near tracks. These are all tailored to the relevant group and include videos and question/answer sessions and rail safety related giveaways to help get the message across."

The Alliance is also offering rail safety visits to Brownies/Guides/Beavers/Cubs/Scout groups, which can directly contribute towards their relevant badge. The visits can be run as individual presentations or a combined session, each lasting 30-40 minutes, and include:

- Beavers – Developed in line with the Safety Activity Badge points. In the session, we provide the opportunity to test knowledge on the Green Cross Code, spot the dangers when near a railway and then run through how to stay safe around a level crossing
- Brownies/Cubs – Also developed in line with the Personal Safety Activity Badge points. In the session, we provide the opportunity to discuss the dangers of construction sites and the railway, as well as covering how to stay safe around a level crossing and the particular risks associated with electrical equipment installed along a railway
- Guides/Scouts – In this session, we run through the dangers of trespassing, level crossings, electrical equipment and being around stations, using the following two videos (if deemed appropriate) : <https://switchedonrailsafety.co.uk/resources/harrisons-story/> and <https://www.youtube.com/watch?v=R6VrWJNOzww>



Community Liaison Officer Thaina Sa'id in Steeple Claydon presenting to Cubs and Beavers

In addition, the Alliance will also feature rail safety as part of its ongoing programme of community 'drop-in' sessions, with future sessions as follows:

Date	Time	Venue
15 August 2023	4pm-7pm	St Laurence Room, Winslow
19 September 2023	4pm-7pm	Steeple Claydon Village Hall
24 October 2023	4pm-7pm	St Laurence Room, Winslow

For further information or to arrange for members of the project team to come and speak to your local school, youth or community group, please email us at publicinformation@ewralliance.co.uk

You Vs. Train – the dangers of trespassing on the railway

Every day, hundreds of people risk everything by trespassing on the railway. When you trespass on the railway there are serious and catastrophic consequences for you, your loved ones, rail staff and communities as a whole. Network Rail and British Transport Police's You Vs. Train campaign highlights the dangers of trespassing on the railway.

Warning: the videos contained in the link contains scenes some viewers may find upsetting.

Watch the video by scanning the QR Code:

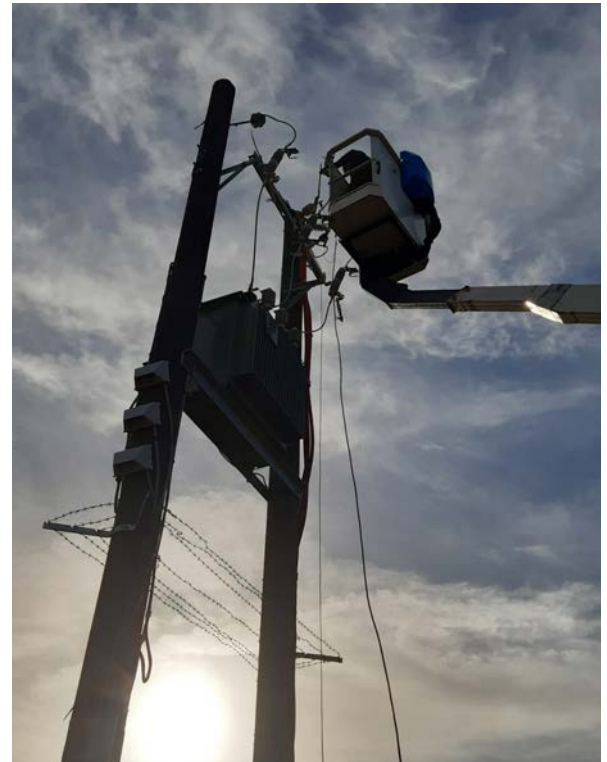
For more information on railway safety, please visit:
<https://www.networkrail.co.uk/communities/safety-in-the-community/>



Progress with utilities

Following the last update in Spring, the EWR Alliance has now successfully completed all utility diversions required to help construct the project. This has involved, repositioning the gas, telecoms, power and water supplies to accommodate the new infrastructure built during the project. The last diversion was completed at Queen Catherine Road in Winter 2022/23.

Working with the utility service providers, the Alliance's Utilities Manager Kerry Iles, supported by Site Engineer Parveen Kalmekolen, is now focusing on completion of the connections between the new railway and the main power supply needed to operate trains. A total of 10 distribution network operator cabinets (DNOs), which supply power from the National Grid to trackside equipment, are required to support the new railway system. Whilst all 9 are now in place, the final one at Claydon West (north of Calvert) will be energised this summer.



Power supply unit installed at Salden Wood

In addition, power, water and comms service installations at the new Winslow and Bletchley High Level Stations are also scheduled for completion by the end of the year. The team are also supporting the project's land reinstatement works, helping to carry out the relevant disconnections to enable the compounds/worksites to be returned to their original condition.

Kerry commented: "It has been a great effort from all concerned to ensure that utility diversions to date have been safely completed. In respect of the reinstatement works, we are actively working to reduce any potential disruption by completing the supporting utility activity at the same time as our highway works."



Gas main at Charbridge Lane



Structures Progress

Note - each bridge/structure has a 'bridge number' prefixed OXD (Oxford to Denbigh), referring to its line designation on the rail network.

Bridge number	Location	Category	Status
OXD4	Selbourne Avenue, West Bletchley	Underbridge	Completed in April 2022 and open to traffic. Installation of additional signage and access construction scheduled for Summer/Autumn 2023, requiring overnight road closures.
OXD5	West Bletchley	Underbridge	Completed in April 2022.
OXD6	Bletchley Road, Newton Longville	Underbridge	Main works completed in March 2022.
OXD7	Newton Longville	Underbridge	Completed in November 2021.
OXD8	Newton Longville	Underbridge	Completed in November 2021, however, the Public Right of Way remains closed and is scheduled to reopen Autumn 2023.
OXD9	Newton Longville	Overbridge	Bridgeworks complete and road opened in December 2022.
OXD10A	Salden Wood near Mursley	Underbridge	Demolition of old structure completed in April 2022 following the opening of OXD10AA.
OXD10AA	Salden Wood near Mursley	Overbridge	Completed in March 2022. Minor finishing works were completed in Spring 2023 the road is now open.
OXD11	Whaddon, Mursley	Overbridge	Completed in May 2022 and open to traffic.
OXD12	Horwood Road, near Mursley	Overbridge	Demolition of small aqueduct completed in August 2020.
OXD12A	Mursley	Footbridge	Completed in May 2022 and open to public use.
OXD13	Horwood Road, near Mursley	Overbridge	Completed in November 2021 and open to traffic.
OXD13A	Moco Farm, near Mursley	Footbridge	Completed in May 2022 and open to public use.
OXD14	Moco Farm, near Mursley	Overbridge	Main works were completed in November 2021, providing access to the local farm. We will be completing some works on the nearby Public Right of Way (PRoW) here in 2023. For more information, please see the PRoW update below.
OXD15	Horwood Brook, Winslow	Underbridge	Completed in July 2022. New access walkway scheduled for installation in mid 2023, however, little public impact is expected.
OXD16	Little Horwood Road, Winslow	Underbridge	Opened to traffic in May 2022, however, additional works including removal of a haul road and highway repairs will take place Summer 2023, with a road closure in place on Little Horwood Road – 28/07/23 – 08/09/23.
OXD17	Horwood Brook, Winslow	Underbridge	Completed in August 2022.



Bridge number	Location	Category	Status
OXD18	Buckingham Road, Winslow	Overbridge	Opened to traffic in May 2022, however, additional works including removal of a haul road and highway repairs will take place Summer 2023, with a road closure in place on Little Horwood Road – 28/07/23 – 08/09/23.
OXD19	Winslow	Footbridge	Completed in June 2022 and open to public use.
OXD20	Furze Lane, Winslow	Overbridge	Completed in September 2022 and open to traffic. Note: Whilst works on the OXD20 bridge are complete, further works on Furze Lane near OXD20 will be required as the team demobilise the nearby Furze Lane compound and carry out highways repair works. This is currently scheduled to take place in 2024, however, further details, including any traffic management requirements will be confirmed nearer the time.
OXD21	Winslow	Underbridge	Completed in August 2022 and the associated new Public Right of Way is now open.
OXD22	Verney Road between Addington and Winslow	Underbridge	Verney Road recently reopened to traffic following the completion of works at OXD22.
OXD23	Addington	Underbridge	Final finishing works are required to the railway walkway at track level, however, this should cause minimal disruption to the public. The PRoW will be opened Summer 2023.
OXD24	Addington, near Winslow	Underbridge	Completed the main works to the bridge in August 2022 and was opened to traffic. The road was recently reopened following the completion of road reinstatement works on Verney Road.
OXD24C	Verney Junction	New overbridge	Completed in November 2021, providing access to the local farm and altered footpath.
OXD25	Sandhill Road, Middle Claydon	Overbridge	Completed in November 2021 and open to traffic. Temporary traffic lights will remain in use until the project has ceased the majority of HGV movements in Summer 2023. Road repairs and road reinstatement works, haul road removals and constructing of a new land owner field access point to take place 10/08/23 - 06/09/23. There will be a full road closure in place during this time.
OXD25A	Middle Claydon (No.4&6)	Footbridge	The footbridge was opened June 2023.
OXD26A	Middle Claydon	Footbridge	Completed in August 2022 and open to public use.
OXD26B	Queen Catherine Road, Steeple Claydon	New overbridge	Completed in October 2022 and open to traffic. Hedge planting and highways finishing works has taken place either side of the bridge. The majority of the hedge planting was completed earlier in the year. The remaining planting at the B1 compound access will be completed in Winter.



Bridge number	Location	Category	Status
OXD29	Main Street, Charndon	Overbridge	Completed in September in 2021 and open to traffic.
OXD29A	Poundon/Twyford	Footbridge	Completed in February 2022 and open to public use.
OXD30	Green Lane, Marsh Gibbon/ Poundon	Overbridge	Completed and opened in Spring 2022, providing access to the local farm.
OXD31	Marsh Gibbon/ Poundon	Overbridge	Completed in Spring 2022.
OXD32	Station Road between Poundon and Marsh Gibbon	Underbridge	The bridge was completed in October 2021 and open to traffic. However, a further closure in this location is required to remove the temporary access point, haul road and road reinstatement works.
OXD32A	Poundon/Twyford	Footbridge	Completed in August 2022 and open to public use.
OXD33A	Marsh Gibbon	Footbridge	Completed in August 2022, and will be opened when approach footpaths are ready in Summer 2023.
OXD34	Marsh Gibbon	Underbridge	Completed in July 2022 and open to traffic.
OXD34A	Station Road, Launton	New overbridge	Completed in March 2022 and open to traffic.
OXD35	Launton	Underbridge	Farm access completed in June 2022.
OXD35A	Grange Farm near Bicester	Footbridge	Completed in October 2021 and in public use.
OXD36AA	Charbridge Lane, Bicester	New overbridge	Structure complete and open to traffic.
OXD36	Bicester Road	Overbridge	Complete and open to the public in June 2022.
OXD36A	Grange Farm	Footbridge	Completed and in public use.

Road Closures & Traffic Management

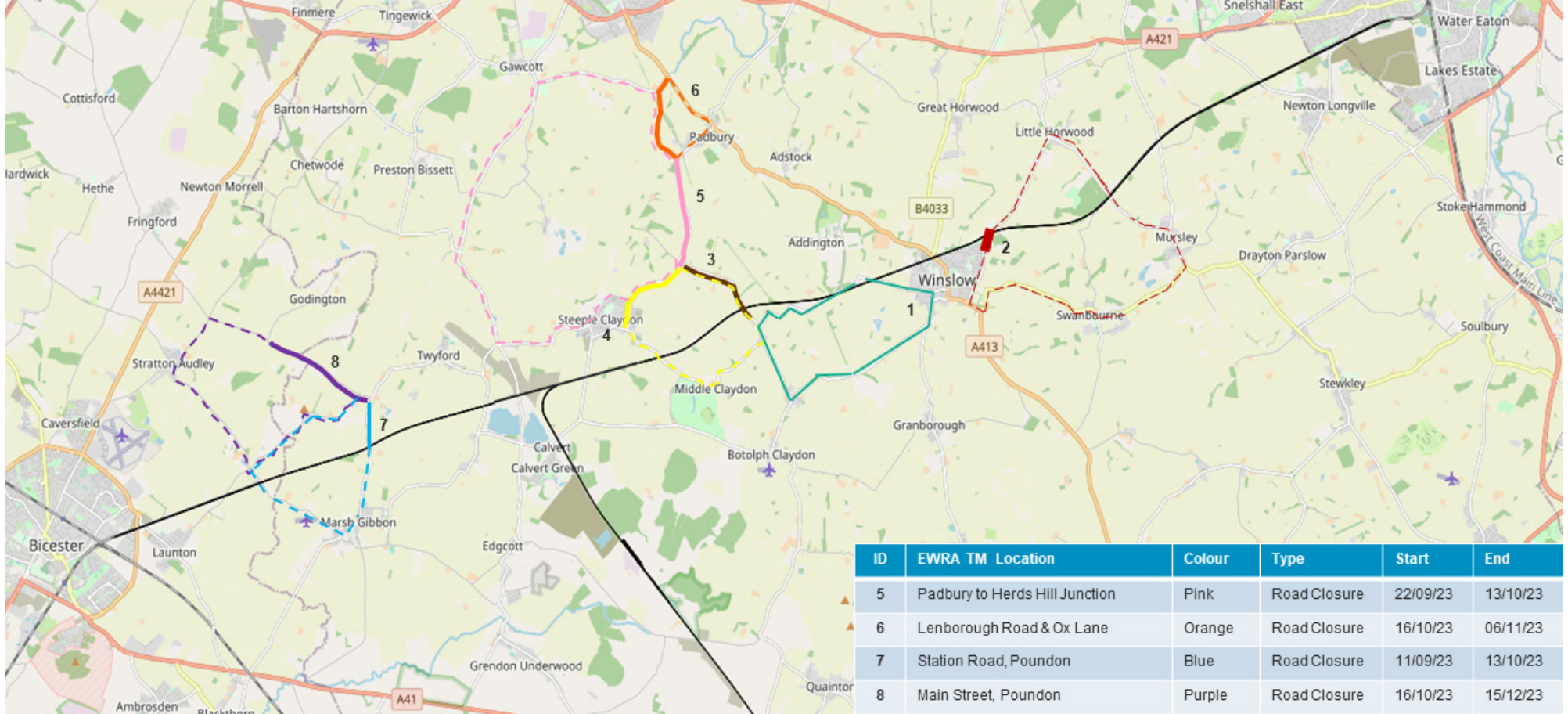
The table below shows completed and upcoming road closures and highways works planned between July-December 2023. In collaboration with Buckinghamshire Council, a detailed plan has been finalised to minimise disruption and coordinate with other works on the highways network unrelated to the East West Rail project. Typically, closures for road repairs will be between four and six weeks. Notifications will be issued to impacted residents in advance of works starting and if there are any changes to the planned works we will notify residents as soon as possible. Details of all highways works will be available online via One Network (<https://one.network>). Please also refer to the map below for the planned works.

Road on map	Area	Location	Description	Traffic Management/ impact	Start	Finish	Status
1	Verney Road	West of Winslow	Highways and repair works and reinstatement of construction access and compound.	Road closure	29/05/23	21/07/23	Completed
2	Little Horwood Road (OXD16)	Winslow	Construction of network rail access, haul road crossings removal, highways repairs and road reinstatement works.	Road closure	28/07/23	08/09/23	In Progress
3	Sandhill Road (OXD25) to Herds Hill	Steeple Claydon	Highway works including haul road removal, works on the temporary highway interventions, resurfacing and road repairs. The removal of temporary access points and the construction of a new access point.	Road closure	10/08/23	06/09/23	Upcoming
4	Herds Hill to Steeple Claydon	Steeple Claydon	Highway repairs and road reinstatement works.	Road closure	07/09/23	21/09/23	Upcoming
5	Padbury to Herds Hill Junction	Padbury	Highway repairs and road reinstatement works.	Road closure	22/09/23	13/10/23	Upcoming
6	Lenborough Road & Ox Lane	Padbury	Removal of traffic signals on bridge. Highway repairs and road reinstatement works.	Road closure	16/10/23	06/11/23	Upcoming
7	Station Road, Poundon	Poundon	Highway works to remove haul road and traffic signals, construction of access and road reinstatement works.	Road closure	11/09/23	13/10/23	Upcoming
8	Main Street, Poundon	Poundon	Removal of traffic signals on bridge. Highway repairs and road reinstatement works.	Road closure	16/10/23	15/12/23	Upcoming



A map of upcoming planned works for July to December 2023

ID	EWRA TM Location	Colour	Type	Start	End
1	Verney Road	Green	Road closure	29/05/23	21/07/23
2	Little Horwood Road (OXD16)	Dark Red	Road Closure	28/07/23	08/09/23
3	Sandhill Road (OXD25) to Herds Hill	Brown	Road Closure	10/08/23	06/09/23
4	Herds Hill to Steeple Claydon	Yellow	Road Closure	07/09/23	21/09/23







Public Rights of Way

We recognise that footpaths, or Public Rights of Way (PRoW), are an important resource for the community and seek to minimise closures of PRoWs where possible. In some instances, closures must be made to ensure public safety whilst works are undertaken, for example to divert watercourses and reroute PRoWs.

We thank the community for their patience as we reopen those PRoWs affected by the project once again and we aim to reopen all closed PRoWs to make them available to the community as soon as possible.

The QR Code below links to a list of PRoWs that are affected by our works, i.e. those where we are required to make material changes to the PRoWs and/or provide the ability for members of the public to cross over the railway that we are currently constructing.

Please note this information is subject to change and any closures/re-openings will be notified nearer the time by the Alliance via the local authorities as necessary.

To view our ongoing PRoW works, please scan the QR Code on the right.

Interactive Public Rights of Way maps for Buckinghamshire & Oxfordshire are available via the respective council websites.

[Buckinghamshire Council PROW maps](#)

[Oxfordshire County Council PROW maps](#)





Stakeholder engagement

The Alliance's commitment to community engagement continues, with public drop-in sessions held at Winslow in April and Steeple Claydon in May. The project team presented information on a wide range of topics, including track construction, road closures and protecting the environment.

In February, the Alliance also provided support for a series of information events organised by HS2 at Calvert Green, Twyford and Steeple Claydon, where we shared our traffic management and road closure plans.

The team will be organising more community engagement events through to the end of 2023. With rail safety sessions taking place at:

- 15 August - St Laurence Room, Winslow
- 19 September - Steeple Claydon Village Hall
- 24 October - St Laurence Room, Winslow

If you would like us to visit your area or would like to be kept up to date with information on the project, please contact the team via publicinformation@ewralliance.co.uk

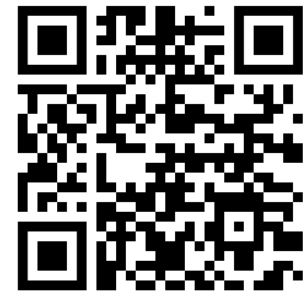


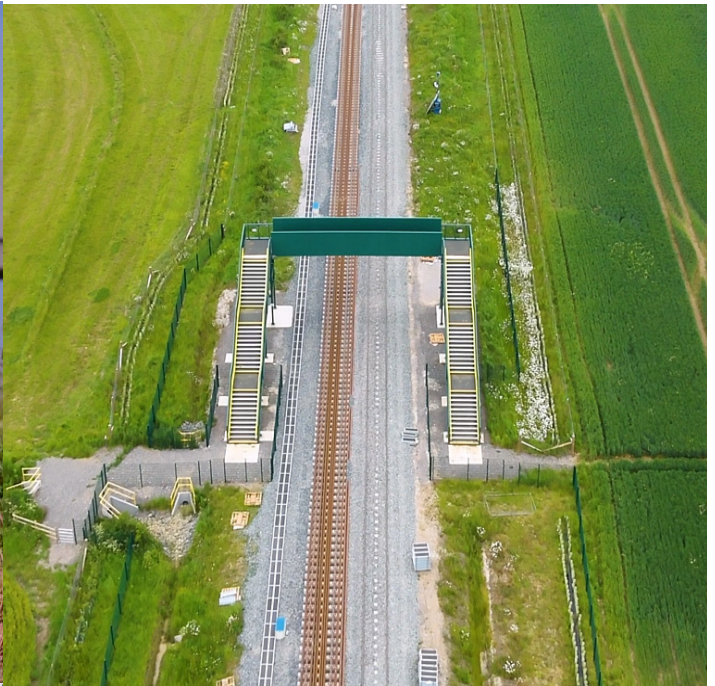
Members of East West Rail Alliance and EKFB colleagues at the Steeple Claydon drop in, 16 May 2023

Drone footage

Every three months, the Alliance completes a full aerial survey of the entire project using drone cameras. The latest progress video was filmed in June of this year and is available to view on the online version of this newsletter.

You can scan the QR code below to view the video via the online newsletter.





Leaving a lasting social legacy

East West Rail Alliance has delivered over £600,000 of social value for the local community in the last financial year, reinforcing its commitment to leave a positive lasting legacy.

The Alliance’s latest Annual Sustainability and Social Return on Investment Report for 2022/23, focuses on the following four key objectives:

- To minimise/mitigate any adverse impact on the environment and deliver environmental benefits across the project lifecycle
- Leave a lasting positive legacy for the local community
- Contribute to the region’s aspirations for economic growth during construction and operation, representing value for money
- Develop a collaborative, diverse and inclusive project team, attracting and retaining the best talent, with safety a priority and making a positive impact on people’s health and wellbeing

Explained the Alliance’s Environment and Sustainability Lead Paula Collins: “Social value remains a cornerstone of our sustainability strategy and in the last financial year, we have maintained or improved our performance against all of our sustainability objectives – something we’ll continue to push to make good on our commitment to leave a lasting legacy of social, economic and environmental benefits.”

Social value highlights from the report include 44 community engagement activities and 24 STEM (Science, Technology, Engineering and Maths) projects with local schools, as well as 14 work placements and the appointment of six new graduates and five new apprentices – all making a direct contribution towards the Alliance’s goal to create a positive impact through the delivery of the EWR2 project.

Social Value in numbers April 22 – Mar 23



Social output or outcome	Social Value
Apprenticeships*	£11,765
Work experience*	£2,015.16
SROI of volunteering*	£630,306
Training to local residents	£22,857
EWR activity total	£666,934.16
Donations	£13,295.91
Grand total	£680,239.07

*calculated using the RSSB’s Common Social Impact Framework (CSIF)



Social value initiatives delivered/supported by the Alliance during 22/23 have included:

- Working with not-for-profit organisation Proactive Young People CIC to support nine careers events across the project footprint
- Attending the Teen Tech festival in Milton Keynes, where students and teachers from across the region took part in immersive challenges and experiments, supported by engineers, technologists and scientists from a wide range of companies
- Support for Milton Keynes and Bicester Food Banks' Christmas appeals, as well as raising funds for Save the Children's annual campaign
- Partnering with Buckingham School to help a group of Year 9 pupils complete the Inspiration Programme, which focuses on health and wellbeing, arts and culture, working life, community and the environment and police/criminal justice. Alliance volunteers delivered a session exploring the wide variety of roles the project requires, as well as the varied career paths its team members have taken
- Supporting Network Rail's 'Emily the Engineer' campaign at Birmingham New Street Station, aimed at engaging 4-8 year olds in the rail industry
- Helping children from Winslow Church of England School's Rainbow class to plant 135 trees donated by the Woodland Trust
- Installing new fencing at Marsh Gibbon Pre-School, with works carried out by Alliance subcontractor Newton Frost Fencing Ltd. In addition, the Alliance team carried out de-vegetation works, to facilitate securing the site boundary and with the bonus of freeing up areas to provide space for additional outdoor recreational activities
- Upgrading the access and parking at Newton Longville Free Church, with works carried out by sub contractor C Dowdy



Members of the Alliance at the Hummingbird Centre



Donated lockers at MK College

Paula added: "All in all, we have had over 200 volunteers involved in delivering 1,000 plus hours towards community-based schemes during the last year, with our most recent initiatives including painting works at Steeple Claydon library, which is scheduled for completion this summer."

The Alliance is also actively looking at the redistribution of assets it no longer requires, with a total of eleven community organisations benefitting from donations of unneeded office furniture, fencing and electrical items during 2022/23. A further six organisations have also benefitted from the free supply of aggregates for use in planned community project works.

The Alliance is also offering the community the benefit of its expertise in a number of areas, providing free training in:

- Emergency first aid (1 day)
- Full first aid (3 day)
- Fire warden
- Practical fire extinguisher use
- Mental health first aid
- Ecology skills (including visits to the project's Ecological Compensation Sites)



The Alliance is happy to receive requests for short duration training courses, to be delivered prior to the completion of works/infrastructure ready date (Summer 2024). For further information, please scan the QR Code.

Finally and also forming part of its sustainability/social value agenda, the project team and the East West Rail Company are actively involved in promoting rail safety – particularly relevant with completion of the new railway between Bicester and Bletchley drawing ever closer (and engineering trains already using the route) - raising awareness of the dangers of the operational railway. To read more, see the rail safety section of this newsletter.

Fantastic fourth gold RoSPA award for the Alliance

East West Rail Alliance has been awarded the coveted RoSPA gold award for the fourth year in a row for its approach to the management of health, safety and wellbeing in the workplace.

Run by the Royal Society for the Prevention of Accidents (RoSPA), the awards – the longest running of their kind in the UK - are seen as being at the forefront of health and safety best practice, with almost 2,000 organisations entering annually.

The awards themselves are judged by a panel of experts who assess candidates' health and safety strategy, approach, implementation and specific measures put in place to keep people safe.



Paul Whitehead, right, with RoSPA Chairman Mike Parker

Once again, the Alliance received official recognition for its efforts at a special event held in London in May. Receiving the award was Head of Health, Safety and Wellbeing, Paul Whitehead, who said: "This is without doubt a credit to all those who work on the project and their commitment to our 'safety essentials.'

"To receive gold accreditation just once would be high praise indeed, but to be awarded this for four consecutive years is an absolutely fantastic achievement. Well done and thank you to everyone on the project for playing their part. Our goal now is to maintain that focus, with a view to making it five in a row in 2024!"

Land reinstatement and compound demobilisation update

Compound demobilisation well underway

Further to last issue’s feature on land reinstatement, Civils Project Leader Chris Reid provides an update on the Alliance’s work to demobilise its compounds and hand back the land...

“As the volume of civils works on the project reduces significantly and the delivery teams reduce in size, so too does the requirement for site compounds and accommodation. As mentioned in our last newsletter, these are now being progressively closed and reinstated to their original condition, enabling hand back to landowners, whilst teams are relocated or consolidated within remaining compounds/offices until the works are completed.

Our compound/land reinstatement programme actually began in the summer of 2022, following completion of earthworks, which enabled some laydown and material processing areas to be cleared and reinstated. Following a pause during the wetter winter months, we recommenced works earlier this year on the reinstatement of compounds B6 at Newton Longville and C1 at Bletchley, followed by B4 near Little Horwood.

In terms of the actual demobilisation process, once services are disconnected and site accommodation removed, we then look to remove temporary access roads and parking areas. This is followed by the removal of sub-base and fill material, with the ground then reinstated with subsoil and topsoil, returning it to its original levels and condition. Temporary drainage and perimeter security fencing is also removed, with permanent fencing and hedgerow installed, land drainage reconnected and the topsoil reseeded where necessary in consultation with landowners.



A2 Compound reinstatement

Compound	Demobilisation start date	Reinstatement completion date
A4 - Twyford	June 2023	October 2023
C4 - Bletchley	August 2023	October 2023
A1 - Launton	Spring/summer 2024	Summer 2024
B3 - Winslow	Spring/summer 2024	Summer 2024



The physical reinstatement itself involves a great deal of coordination between the project's site teams, with all remaining materials, signage and plant needing to be removed. This work is carried out by the logistics team, with assets either being retained for use elsewhere on the project, sold on to others or offered to external parties as part of the project's social value work.

In addition, service disconnections by utility providers are co-ordinated by the Alliance to meet the demobilisation dates, followed by the removal and collection of the temporary site accommodation.

Once the compounds have been reinstated, the project then undertakes a programme of highways works which involves the removal of accesses, road reinstatement works and permanent repairs to the carriageway, along with the HGV routes which have been used to access the compounds. And, as always, throughout the Alliance's aim is to carry out these works with minimal impact to the local community, but road closures will be necessary due to the nature of the work."

You can read more about the project's demobilisation progress in the next issue of this newsletter.

Rail Minister visits Winslow Station

Minister for Rail and HS2 Huw Merriman paid a visit to the new Winslow Station in April to see how the works are progressing.

Organised by the East West Rail Company, the visit saw the Minister given a guided tour by East West Rail Alliance Director Mark Cuzner, former Civils Project Leader Mel Banks and EWR Co's Chief Executive Beth West.



Rail Minister Huw Merriman (far right) with EWR Company's Beth West and the Alliance's Mel Banks and Mark Cuzner





EWR Alliance working for Network Rail on behalf of the East West Railway Company